



## Scenic Views

A newsletter from the

# Milwaukee Area Land Conservancy

Winter 2012



### Milwaukee Area Land Conservancy

MALC's mission is to preserve and protect valuable land and water resources for the benefit of the public, as well as for the wildlife dependent on these resources, in order to maintain quality of life, biological diversity, and natural scenic beauty for future generations

#### BOARD OF DIRECTORS

##### President

Donald Dorsan

##### Vice President

Howard Aprill

##### Secretary

Patricia Brust

##### Treasurer

Tim Burch Ph.D.

Paul Ryan

Kristin Marek

Matthew Smith

##### Program Assistant

Kendra Wilhelm

##### Volunteer Coordinator

Craig Mattson

##### Land Management Team

Richard Barloga

Mike Marek

##### Legal Counsel

Monica McKee

#### ADVISORS

##### Legal Counsel Advisors

Dennis Grzezinski

Arthur Harrington

Fred Klimetz

Peter McKeever

Steven Schmucki

##### Land Use and Planning Advisors

Larry Leitner Ph.D

Neil Luebke

Perry Rossa

John Siepmann

Kristen Wilhelm

## MALC acquires Sidney Woodlands Preserve

Milwaukee Area Land Conservancy (MALC) recently acquired Sidney Woodlands Preserve, a 3.7 acre parcel of land in Glendale, Wisconsin.

Sidney Woods was acquired by the MALC with the assistance of a generous land donation from We Energies and a grant from the Wisconsin Department of Natural Resources Knowles-Nelson Stewardship Program.

The woodland contains a healthy forest of beech, oak and maple, and small wetlands.

Visitors can walk the trails to study the native flora and fauna or just enjoy the peaceful scenery within the tree-filled woodland. Please go to [www.mkeconservancy.org](http://www.mkeconservancy.org) to learn more about Sidney Woodlands Preserve.



*Sidney Woodlands Preserve after volunteers removed approximately an acre of Buckthorn.*



To right->

*Map of Sidney Woodlands Preserve, located just north of Silver Spring Drive and 27<sup>th</sup> Street in Glendale, WI*

Pictured top center - Monica McKee, Karen Kant, John Sanborn and Perry Rossa



### A note from our President, Don Dorsan

I took advantage of the unseasonably warm weather a few days ago and walked through the Carity Prairie in Franklin. As I walked around the Conservancy and reflected on the balance of the ecosystem, and the abundant number of acres MALC now holds open to the public, it was so very apparent that like any ecosystem, our organization is inter-reliant on multiple aspects such as our tireless volunteers, our supporters, our neighbors and our staff. Without these cooperative partnerships, we would not have achieved the continued progress in conservation that we have so far. I truly want to thank each and every one of you for your hard work and support.

We started the year with a tree planting to mark Arbor Day at Franklin's Fitzsimmons Woods. The event was conducted by our program assistant, Kendra Wilhelm. Kendra did a great job obtaining trees at no cost from the Argosy Foundation's tree program, recruiting volunteers, and coordinating and overseeing the planting event. Over 100 trees were planted, thanks to many who volunteered that day.

In 2012, we were also busy finalizing a two-year effort for the acquisition of Sidney Woodlands Preserve on Milwaukee's north side. Sidney Woods is a unique woodland set in a highly urban environment. It has been a source of pride and enjoyment for the nearby neighborhood and an important diverse plant habitat and resting area for migratory birds.

After a For Sale sign went up on the property, MALC was contacted by concerned neighbors. A neighboring attorney, Monica McKee, assisted MALC staff, resulting in a cooperative agreement with We Energies for a partial land donation, which was matched with funds from the Wisconsin Stewardship Program. The land is now held privately by MALC but is open to the public.

Shortly after MALC acquired the Sidney property, Craig Mattson joined us and coordinated a very successful buckthorn removal event. I was thrilled to see an immediate turn-out of neighboring residents for this first restoration event. This is yet another great example of how partnerships can make a difference in maintaining the land's beauty for everyone to enjoy.

MALC has added many new names to our volunteer list this past year as we continue to grow. To all of you, Thank you and Welcome! It's great to see the land conservation legacy shared with so many new and dedicated individuals. We continue to seek additional volunteers regardless of level of expertise.

Financially, MALC continues to build on a solid base, thanks to the careful stewardship of our funds and the support of our donors. We appreciate your giving and look forward to your renewed support and new donors to help MALC fulfill its mission. You can make a donation today by returning the contribution form attached to this newsletter. Your donation is tax deductible as allowable by law.

My thoughts turned to the upcoming year, as I concluded my walk through the Prairie, past the area recently prepared for next spring's controlled burn. As we continue to restore and preserve the properties we already control, I wonder what other opportunities will present themselves in the coming year. Whatever opportunities or challenges lie ahead of us, I know that we have the volunteers and supporters in place to continue our work.

Thank you once again for a great year. I look forward to working with you all in the coming year.

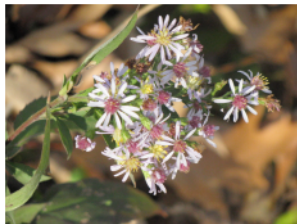
Sincerely,

*Don Dorsan*

## Buckthorn Brigade: Restoration in action with the MALC at Sidney Woodlands Preserve in Glendale, WI



*John Sanborn and volunteers work as a team to cut and clear away Buckthorn.*



*A delicate Aster is revealed during the volunteer cleanup.*



*Neighbors from Glendale community observe the progress made at the cleanup.*

“I really have been struck by how open the woodland appears, now that the buckthorn has begun to be cleared out. I hadn't realized how slowly, over the years, so much of the area had been taken over by the buckthorn and other invasive species. I'm excited to think of this area being returned to a more pristine state; allowing the native species to reestablish themselves in greater numbers as the clean-up continues. Thanks to the Conservancy and all others contributors who made this possible.”

Karen Kant – MALC volunteer

Milwaukee Area Land Conservancy (MALC) leaders and volunteers gathered on Saturday, November 10 at Sidney Woodlands Preserve in Glendale, Wisconsin to participate in a Buckthorn clearing event. On this warm, fall day 20 people worked in teams led by chainsaw-wielding professionals, followed by brush removers and herbicide applicators to clear an estimated one acre worth of Buckthorn from the newly acquired property.

Teams were organized by a little after 11 a.m. and began sawing Buckthorn, pulling brush to the side of the road, and applying direct herbicide to the Buckthorn stumps. MALC crew members and volunteers performed each task in rapid succession, moving throughout the east perimeter of the woodland. By 2 p.m. a city block's length of brush lay in stacks by the side of the road.

The brush pile dissipated almost as fast as it was created. Lead crew members fed stacks of brush into a large chipper. The crew's work will allow a more favorable habitat for the 136 plant species that currently persist.

The MALC would like to thank all volunteers who helped with this event. MALC extends a special Thank You to Mike Marek with Marek Landscaping for running his wood chipper, MALC board member Matt Smith, for his chainsaw skills and equipment use from Schlitz Audubon Nature Center, and Arborist John Sanborn for his chainsaw proficiency. Sidney Woodlands Preserve is open to the public, so please come and enjoy this unique, ecologically distinctive property.



*Anne Kaiser takes a break from pulling Buckthorn brush from the woodland.*

*Naturalist Richard Barloga has identified 136 native plant species, making the property a premium example of pre-European settlement habitat.*



*Mike Marek feeding Buckthorn brush into his large chipper.*



*Matthew Smith uses his forestry saw to cut Buckthorn from the woodland.*

**MALC receives grant to help land stewardship efforts at Carity Prairie in Franklin, WI**

Carity Prairie (City of Franklin) saw additional restoration this year thanks to the *Partners for Fish and Wildlife* grant administered by the *U.S. Fish and Wildlife Service*.

The property is identified as a Southeastern Wisconsin Regional Planning Commission (SEWRPC) Environmental Corridor and is more specifically located near the headwaters of Legend Creek, which flows directly into the Root River. The U.S. Fish and Wildlife Service committed \$1,500 of the \$4,500 project costs. Matching funds came from MALC, with a portion from a settle account administered by Attorney Dennis Grzezinski. Jason Dare, the Principal Ecologist for Dare Ecosystem Management, LLC was contracted to perform the work.

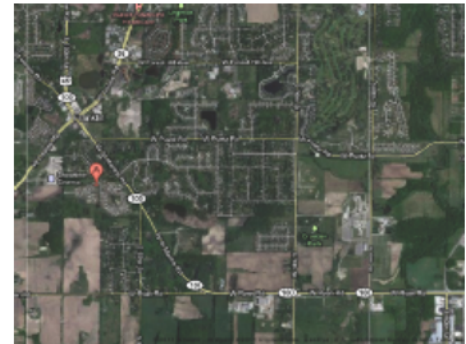
Invasive brush control and management was performed on an additional 3 acres of the 23-acre natural area. With the removal of brush has come a significant increase in suppressed native prairie plants. The site's diversity and plant distribution continues to improve with each restoration since MALC's initial land acquisition.

After the crew completed its work, three new interpretive signs (see photo example) were installed to improve understanding of the habitat type and significance of the land's protection in support of wildlife, flood prevention and water quality.

MALC continues to research and apply for grant opportunities that can assist with the expense of management and protection of this beautiful and rare ecosystem. Your donations are important to continue our mission.

**Please consider a donation today!**

*To right->  
Aerial view  
map of  
Carity  
Prairie,  
located in  
Franklin, WI*



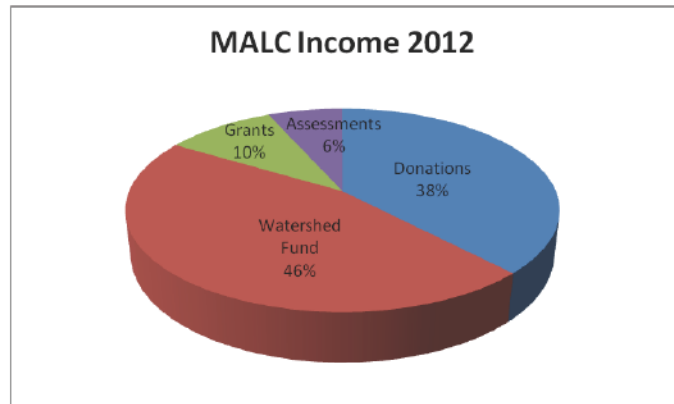
*Heath aster feeds many fall visiting insects at the Carity Prairie.*



*Photo of the new signage posted at Carity Prairie. The signs were designed by Marek Landscaping, LLC.*

**2012 Conservancy Revenue**

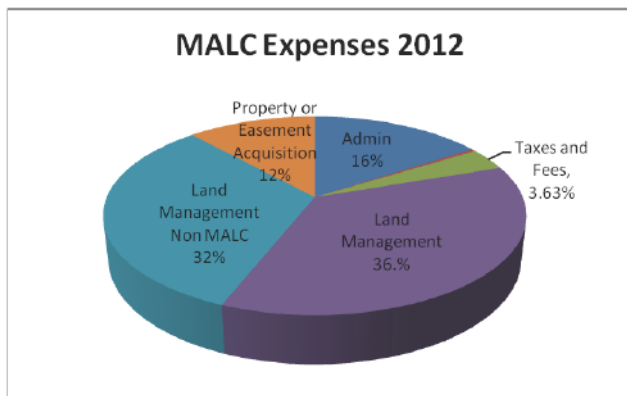
The Milwaukee Area Land Conservancy remained financially strong in 2012 with income up nearly 6 percent over 2011, as of December 15<sup>th</sup>. MALC increased the use of volunteer staff, volunteer support, and in-kind contributions, which assisted in a 7 percent cost decrease in administrative expenses in relation to land maintenance and acquisition costs. A significant portion of income for the year 2012 came from contributions into the Watershed Fund,



a fund set aside to support conservation efforts in the Legend Creek, Ryan and Root River watersheds located in the City of Franklin. A noteworthy contribution dedicated to the Carity Prairie restoration efforts held in this fund account came from the Partners for Fish and Wildlife grant administered by the U.S. Fish and Wildlife Service. MALC funds received for the Carity restoration tasks were distributed over 2012 and 2011. The Watershed fund also provided financial support for other ongoing restoration efforts and improvements such as new interpretive signage at Carity Prairie.

**2012 Conservancy Obligations**

Grand funding as well as in-kind donations helped MALC complete the acquisition of the Sidney Woodlands Preserve located in the City of Glendale. This parcel provides MALC with its 5<sup>th</sup> parcel under protection using available conservation methods and the third parcel open to the public for outdoor enjoyment.



With 80 percent of MALC’s expenditures going directly to land costs such as management, acquisition and monitoring efforts, MALC makes efficient use of incoming revenue by providing matching contributions to your donations, grant funding, and other forms of support. This year the Conservancy extended its efforts to the Franklin Savannah. Through the use of funds previously secured for restoration at Milwaukee County’s, Franklin Savannah State Natural Area, MALC assisted the County Parks with consultant coordination and restoration costs at the Savannah. (See Land Management non-MALC on chart.)

Other land management expenses took place at MALC owned properties or easements, which comprised 36 percent of the organizations expenses this year. Expenses included trail maintenance and planting work completed at the Carity Prairie, and Fitzsimmons Woods, also in the City of Franklin.

**Your contributions at work, making a difference for the people and the Greater Milwaukee Area!**

[www.milwaukeeconservancy.org](http://www.milwaukeeconservancy.org)

MALC@mkeconservancy.org

**Thank you to our financial Donors, In-kind Contributors, and Partners!**

**Individuals**

Howard and Paula Aprill	Kathy and Douglas McGrath
Richard Barloga	Monica McKee
Patricia Brust	John Michlig
Tim and Lauren Burch	Marjorie Pagel
Don and Pauline Dorsan	John Sanborn
Dennis Grzezinski	Emery Schmid
Arthur Harrington	Matthew Smith
Vicki Hudson	Perry Rossa
John and Martha Lunz	Paul Ryan
Kristin and Mike Marek	Kristen Wilhelm
Craig Mattson	

**Businesses and Partners**

Hidden Oaks HOA  
Knight Barry Title Group  
Living Lands & Waters Million Trees Project/Argosy Foundation  
Marek Landscaping LLC  
Mead & Hunt  
Milwaukee County Department of Parks, Recreation and Culture  
Northwestern Mutual Foundation  
Prairie Grass Preserve HOA  
QPS Employment Group  
Schlitz Audubon Nature Center  
The Conservation Fund  
We Energies  
Wild Ones Southwest/Wehr Nature Center Chapter  
Wisconsin Metro Audubon Society

**Grantmaking Organizations**

Citizen's Natural Resources Association  
U.S. Fish and Wildlife Service  
WI Department of Natural Resources Stewardship Fund

I am interesting in helping MALC protect beautiful places!

Please mail this form along with your check to:

**The Milwaukee Area Land Conservancy**

**P.O. Box 320304**

**Franklin, Wisconsin 53132**

Make checks payable to: *Milwaukee Area Land Conservancy.*

New Growth \$35  Hickory Level \$500 - 999   
Oak Level \$36 - 99  Forest Level \$1000 +   
Maple Level \$100-499  Other Amount

Please Print

Name: \_\_\_\_\_

Address: \_\_\_\_\_

City: \_\_\_\_\_ State: \_\_\_\_\_ Zip Code \_\_\_\_\_

E-Mail: \_\_\_\_\_ Phone: \_\_\_\_\_

Your contribution will support land acquisition, land stewardship and general operating expenses that help us carry out our mission.

MALC is a 501(c)3 nonprofit organization.  
Contributions are tax deductible as allowed by law.  
[www.mkeconservancy.org](http://www.mkeconservancy.org)



Milwaukee Area Land Conservancy, Inc.  
P.O. Box 320304  
Franklin, WI 53132

